

Hollub Homes has advanced the highest standards for custom home building and renovations in South Florida for 60 years. The firm has been honored twice with the coveted "Best Of Show" award and a "Custom Home Pacesetter" award. Each home by Hollub is a unique creation featuring thoughtfully considered designs, finishes, cabinetry and detail.

By virtue of solid relationships with all our subcontracting professionals, Hollub Homes provides its buyers with a level of unprecedented service, client satisfaction, incomparable quality and workmanship. Hollub Homes are truly relationship built.



FT LAUDERDALE  
In t r a c o a s t a l

**HOLLUBHOMES**  
relationship built.

9771 South Dixie Highway Miami, Florida 33156  
305.665.4275  
hollubhomes.com

BAY COLONY INTRACOASTAL ESTATE | 80 Compass Lane | Ft. Lauderdale



Winner of  
FABA  
Best Of Show

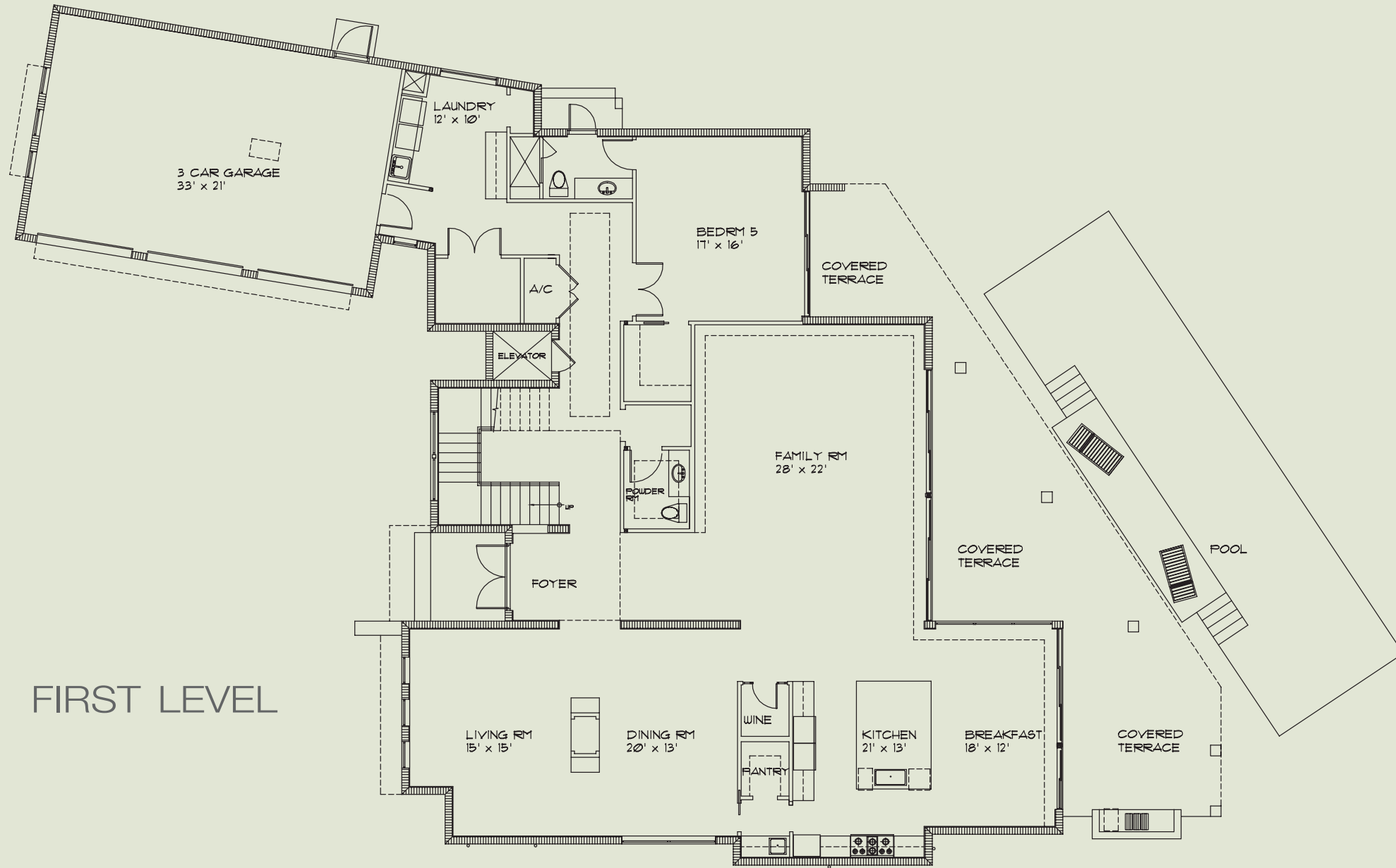
Custom Homes  
Pacesetter  
Award Winner

Winner of  
BASF  
Best of Show



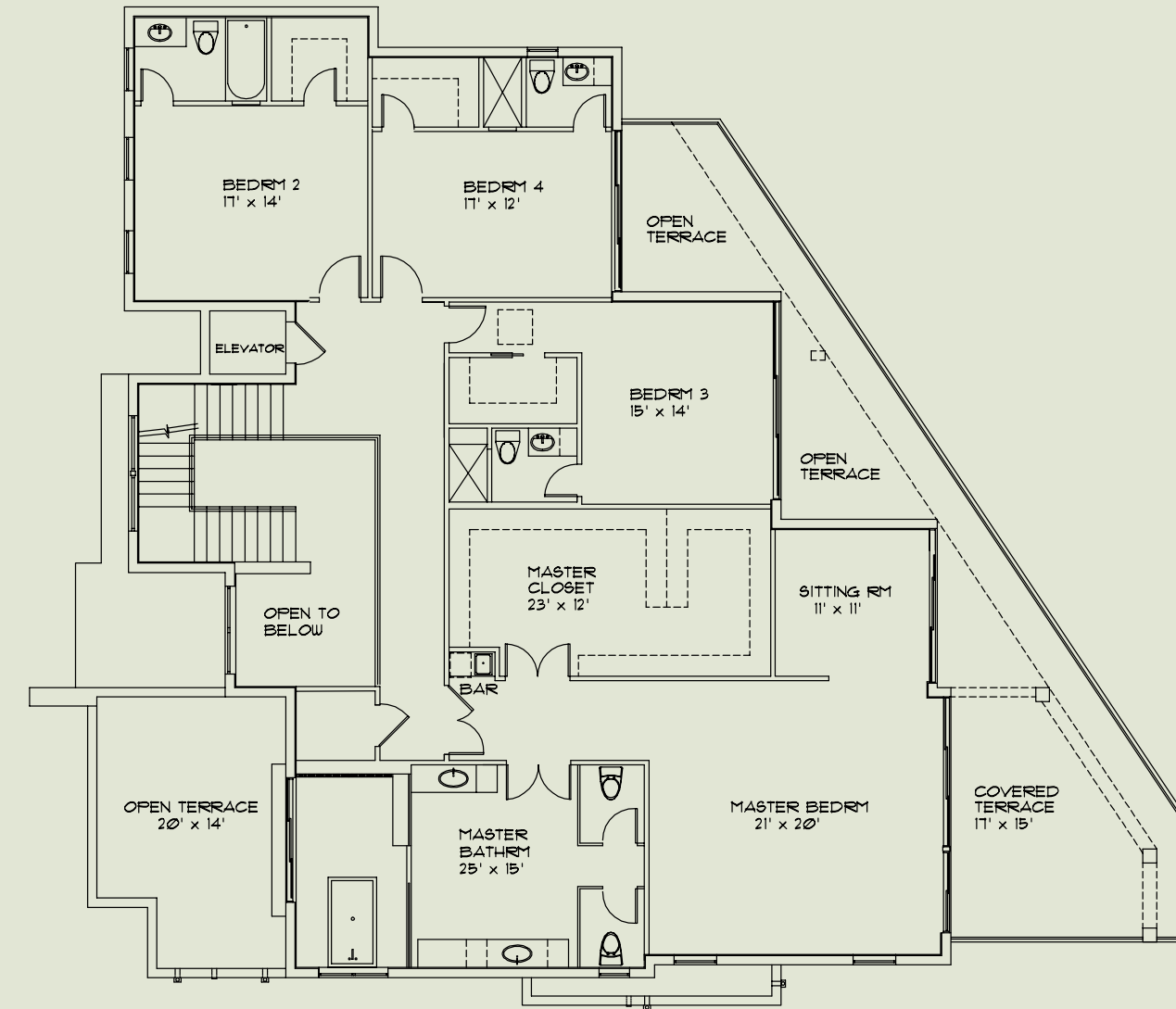
*Celebrating 60 years of exceptional custom home building.*





FIRST LEVEL

SECOND LEVEL



Hollub Homes, South Florida's finest builder and winner of nine 2013 Florida Atlantic Builder's Association PRISM awards, including BEST OF SHOW, is creating a transitional and sophisticated residence amid the exclusive setting of Bay Colony. Masterful architecture and exquisite interior design by Helene Hollub position this home with breathtaking views of the intracoastal waterway. This property has a 103' concrete dock and has direct ocean access.

With legendary Hollub Homes quality and attention to detail, this home has 5 bedrooms, 5.5 baths, a family room, elevator, wine room, 50' pool and 3 car garage. As with all Hollub homes, this residence is constructed with the highest quality standards using reinforced concrete block construction on both floors, hurricane resistant windows and doors, a complete house system with smart home wiring and energy star technology.

Bay Colony provides 24 hour guard gate and security patrol, is less than an mile to the beach, near golf courses, tennis and yacht clubs and this area's most elite private schools.

Hollub Home reserves the right to change or modify all plans, specifications, features, colors and prices without notice. All plans and elevation renderings are shown as artists' conceptions and are not to scale. Square footage and sizes are approximate. Purchasers will pay at closing all recording fees, documentary stamps, and title insurance in addition to purchase price.